



MPS NEWS

San Mateo Ave
MILDURA
5023 1851
mildura.ps@edumail.vic.gov.au
www.facebook.com.au/
MilduraPrimarySchool



03/05/2018 OSHC 1300 665 699

From the Principal

First off all I would like to thank the students and their families who came along to our Student Learning Conferences last Tuesday. This was an opportunity for students, parents and families to celebrate the learning that has been happening so far this year and to think about the direction of each students learning in the near future. If you were unable to come along please arrange a time with the class teacher to share in the learning journey of your children.

Last week was also a proud moment for Mildura Primary School. We played a role in the ANZAC Ceremony at Henderson park. I would like to thank Mrs Paletua for organising our school choir to attend and sing 'Lest We Forget' at the 11am service. I am proud of the way our students conducted themselves (in the rain) and how proudly they sang to a very large audience. It was a memorable moment for us as we contributed to remembering the people that have helped to shape our country and community. Also thank you to our school captains, Bailey and Alice for laying a wreath on behalf of the Mildura Primary School Community.

NAPLAN

The National Assessment Program – Literacy and Numeracy (NAPLAN) tests for Grade 3 and 5 students will be held in two week's time

WHEN - Students will be completing the tests on Tuesday 15th, Wednesday 16th and Thursday 17th of May

WHAT - The tests are to see where students are at with their reading, writing, spelling and maths. This information can be used to support teaching and learning programs and improve student learning.

WHY - These tests are conducted over a three day period and are a snapshot of your child's ability at that time. Remember that your child's report for June and December provide a summary of the information that has been compiled from various assessment tasks (including the NAPLAN test) conducted throughout the year. Also regular Compass entries and Student Led Conferences throughout the year provide extra information about your child's learning.

We are confident that the information you receive as a result of your child's participation in the NAPLAN tests will be valuable in helping you to assess your child's progress in Literacy and Numeracy.

If you have any concerns please speak to your child's classroom teacher as soon as possible.

HOW TO HELP WITH YOUR CHILD'S LEARNING

It is important that students
are at school on time
had a healthy breakfast
are getting a good night's sleep

David Midgley
Principal

Mother's Day stall

Parents club will once again be holding a Mother's Day stall.

It will be held on Thursday 10th May

We have a wide range of gifts available this year, priced from .50c to \$5.00.

Many wonderful items will be available on the day.

Each child will have the opportunity to visit the stall with their class to make their purchases.

If you would like your child to purchase a gift from the stall, please send some money to school with them on the day. Please try to send small notes or coins.

This year there will be a purchase limit of TWO GIFTS per child.

If there are any gifts left over, after all classes have been shopping, children can then return to purchase extra gifts if they wish.

If any parents/carers are available to help with the stall on the day, please contact one of our parent's club members or leave your name and number at the office.

2018 term 2 Calendar

M
a
y

J
u
n
e

Sun	Mon	Tue	Wed	Thu	Fri	Sat
29	30	01	02	03  Newsletter	04	05
06	07	08	09	10 Mothers Day stall 	11 Interschool sport Ranfurly PS	12
13	14	15 NAPLAN	16	17 newsletter 	18 Interschool sport Mildura South PS Gr1/2 activity day Gr 2 sleepover	19
20	21	22	23 Georges Marvelous Medicine. Gr 5&6	24	25 Interschool sport Mildura West PS Teddy Bears hospital visit-Prep 	26
27	28	29	30	31  Newsletter Eisteddfod-Poetry	01	02
03	04	05	06	07	08	09
10	11 Queens Birthday Public holiday	12	13	14 newsletter	15	16
17	18 Eisteddfod Choir	19	20	21	22	23
24	25	26	27	28 newsletter 	29 Last day term 2	30
01	02	03	04	05	06	07

School Holidays

CHANGE OF DETAILS

Name of Student: _____ Grade: _____

Address: _____

Phone: _____ Mobile: _____

Emergency Contact:

Name: _____ Phone No _____

Other changes: _____

Uniform shop

School Uniform Price List

School uniform is compulsory at Mildura Primary School. School uniforms are available at all times from the office. Please keep an eye out in the newsletter for information regarding 2nd hand uniform sales throughout the year.



Polo – Short & long sleeve	\$22.00
Basketball Shorts	\$10.00
Track/cotton pants	\$18.00
Skorts	\$17.00
Fleecy Zip Jacket	\$22.00
Windcheater	\$15.00
Bucket Hat	\$ 9.00
Surf Hat	\$10.00
School bag with logo	\$32.00
Badges – Iron on	\$ 2.00
Library Bag	\$10.00

Here for Learning @ MPS

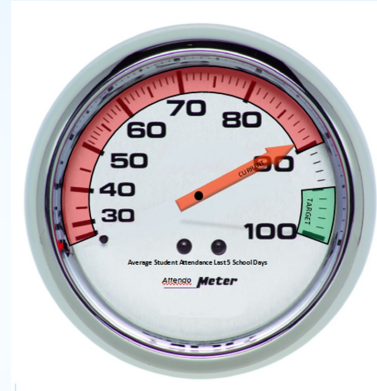
Attendance

It is well know that education is the single greatest tool to improve the health, wealth and happiness of a community.

Getting your child to school on time every day is a key to this education.

Last weeks attendance dropped off a little to 89% across the school. Together we can lift this to more than 95%.

Please remember to contact the school if your child is absent.



You Can Do It! Organisation

20/04/18
PC-Nosi Paongo
PS-Iglesias Miki
PT-Rhiannon Cass
1/2A-Michael Bain
1/2B-Jazalee Dempsey
1/2M-Abigail Barker
1/2N-
1/2S-Brad Frost
3/4A-
3/4B-Aiden Lane
3/4M-Victoria Kala
3/4P-Hamid Sultani
5/6L-Natasha Shahindra
5/6N-Mitch Hand
5/6P-
5/6T-



27/04/18
PC-Seth McCullagh
PS-Alexis Francis-Corrin
PT-Abbey Mattschoss
1/2A-Cooper Price
1/2B-
1/2M-Fateen Talabi
1/2N-
1/2S-Matangi Tuifua
3/4A-Jospeh Lopesi
3/4B-Cameron Symens
3/4M-Turker Kuzu
3/4P-Decoda Bramley
5/6L-Murtaza Rezaie
5/6N-Emily Smith
5/6P-Sharna Singleton
5/6T-Belle Kho



FOOTBALL FEDERATION
SUNRAYSIA



In 2018 Football Federation Sunraysia is offering the following extra opportunities to participate in the world game and to play Football (Soccer) on a Sunday, with your friends and to have fun

Under 13 Girls Only

Played on a half pitch (2 x25 minute halves)
8 players per team on the pitch

Under 16 Girls Only

Played on a half pitch (2 x25 minute halves)
8 players per team on the pitch

Under 18 or 20 Boys

(depending on ages of those interested)
Played on a half pitch (2 x35 minute halves)
8 players per team on the pitch

Teams can be entered through a school or by joining a club
For further information ring

Susan Watts – 0410 557 485

Or contact one of the clubs

Irymple Knights SC	President - Dom Primarano	0487 766 501
Mildura City SC	President - Vince Pollifrone	0408 235 669
Mildura United SC	President - Phil Cochrane	0437 169 817
Nichols Point SC	President – Nicholas Zachary	0402 378 662
Northern Suns SC	President – Jenny Donnelly	0417 382 608
Three Colours SC	President – Lucy Fotia	00439 302 090

Sunraysia Interschool Chess Competition

5 representatives from the MPS chess team attended Trinity to compete in the interschool chess competition on the 20th of April. All of our players placed in the top 50% of competitors in the primary division. Our top player came 25th. It was a fun day and we look forward to playing and winning more games in the future



Chess Training

Come and practice your openings and end game strategies to take your chess to another level. Students and teachers welcome

Wednesday
Lunchtime and recess



Sport Report

On Thursday 26th April students in Grade 5&6 participated in Girls Football and Boys Netball. The Girls Football did extremely well winning all of their games, with their opponents only ever scoring 1 point against them. The Boys Netball played well but we're unable to come away with a win. Well done to the effort and training the students put in prior to the event.



1/2A SUPER STARS



In Maths this week we are learning about subtraction and money.
We love reading books on our iPads and netbooks.
We are learning to spell many high frequency words to help us with our reading and writing.
We are very well organised and know how to stay on task during small group work.



Student Banking

Remember, every Tuesday is student banking day! Bring your bank book into the office or to your teacher every Tuesday and start saving! If you don't have a Commonwealth Dollarmite account and would like to open one, visit the Commonwealth Bank for details.



A place for Families with Young Children

Playgroups at Mildura Primary School

Goanna's Playgroup: Wednesday 1pm to 2:30pm

Mildura Community Playgroup: Thursday 9:30am to 11am total learning centre

Beyond the Rainbow Storytime: Friday 9:30am to 11am

Thursday 1pm to 2:30pm
ALL groups are **FREE**.



Want to find out more?
Call us on 0437 077 689

mfc
malleefamilycare